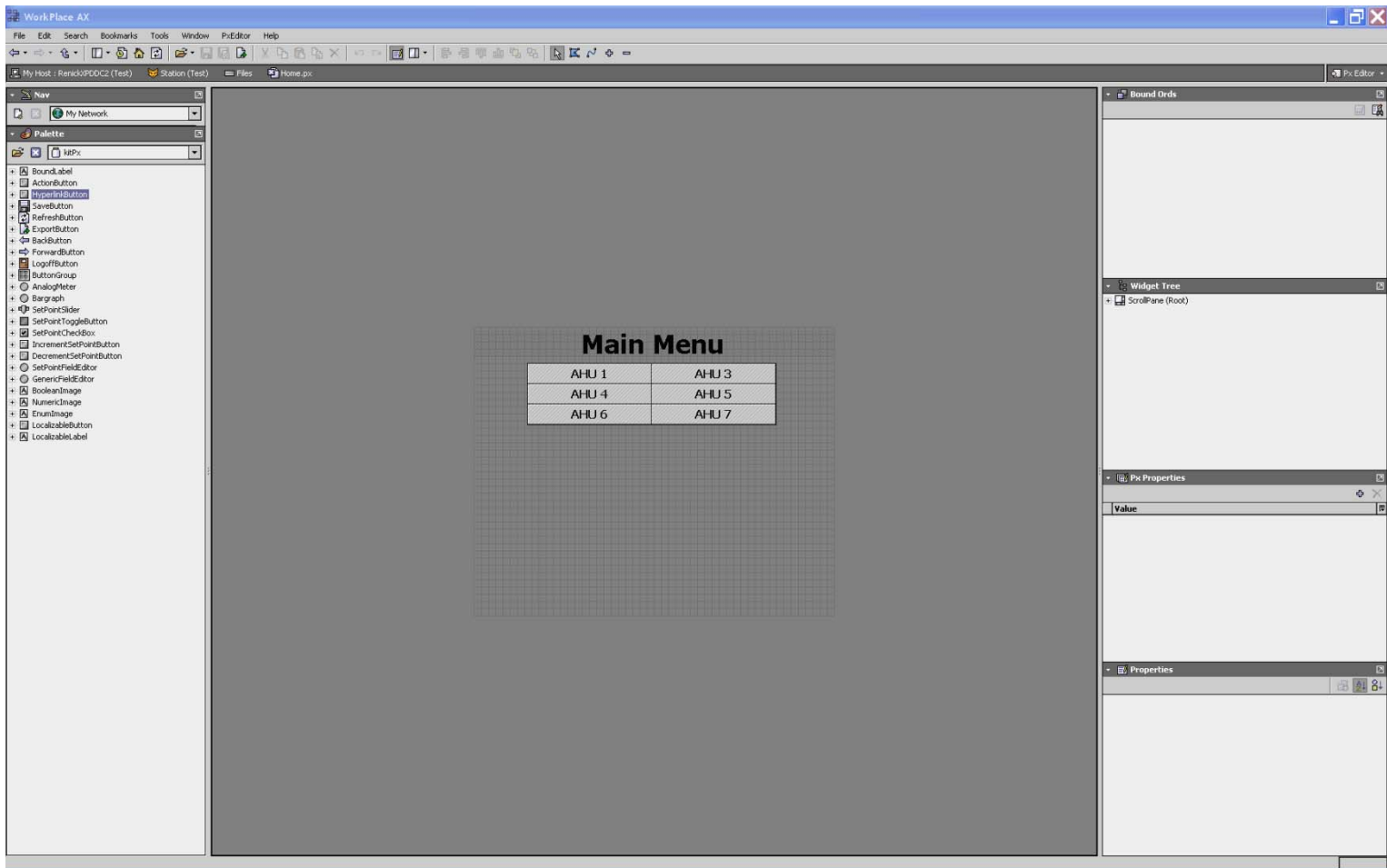


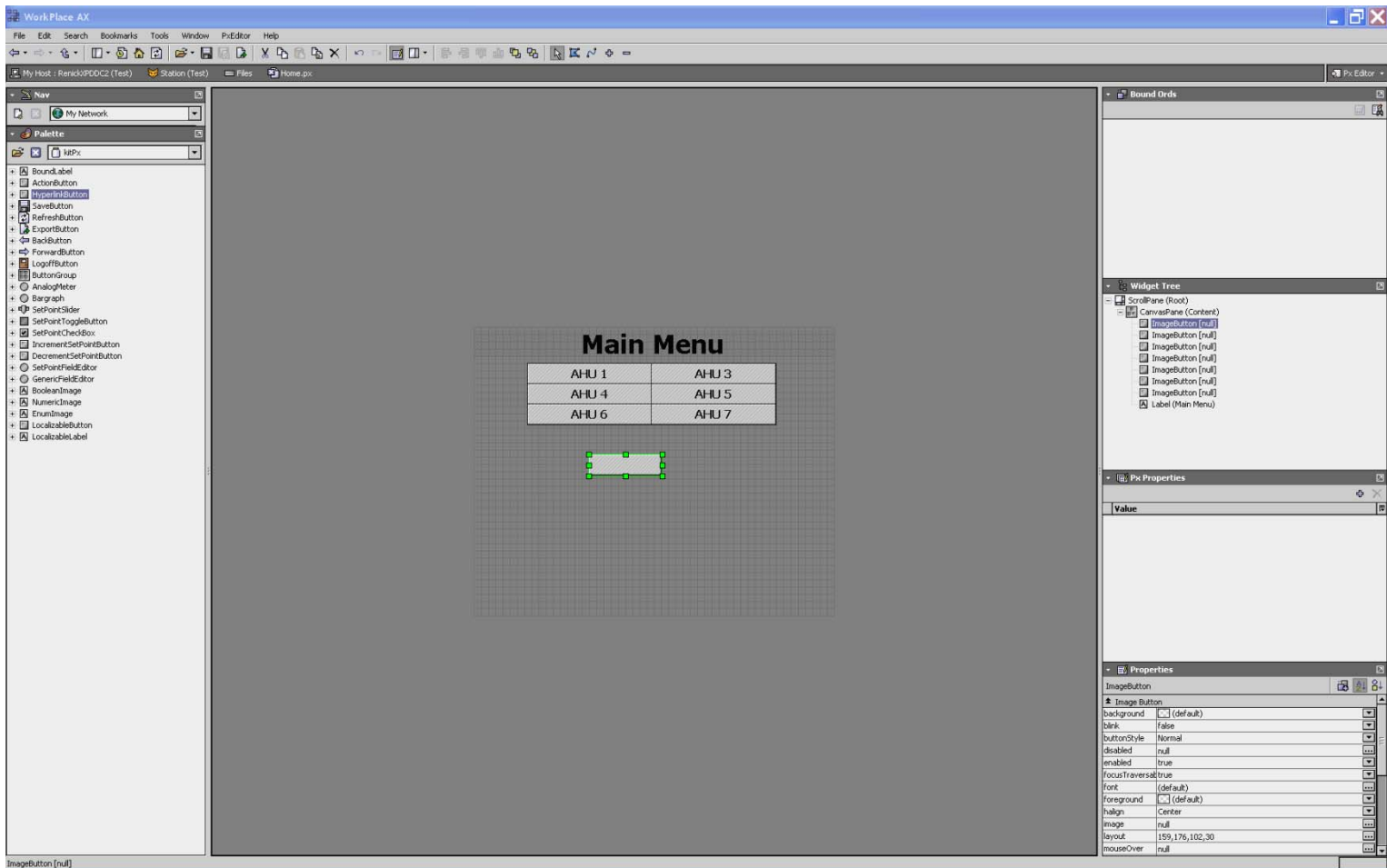
Hyperlink to Maverick with Tridium Supervisor or Jace



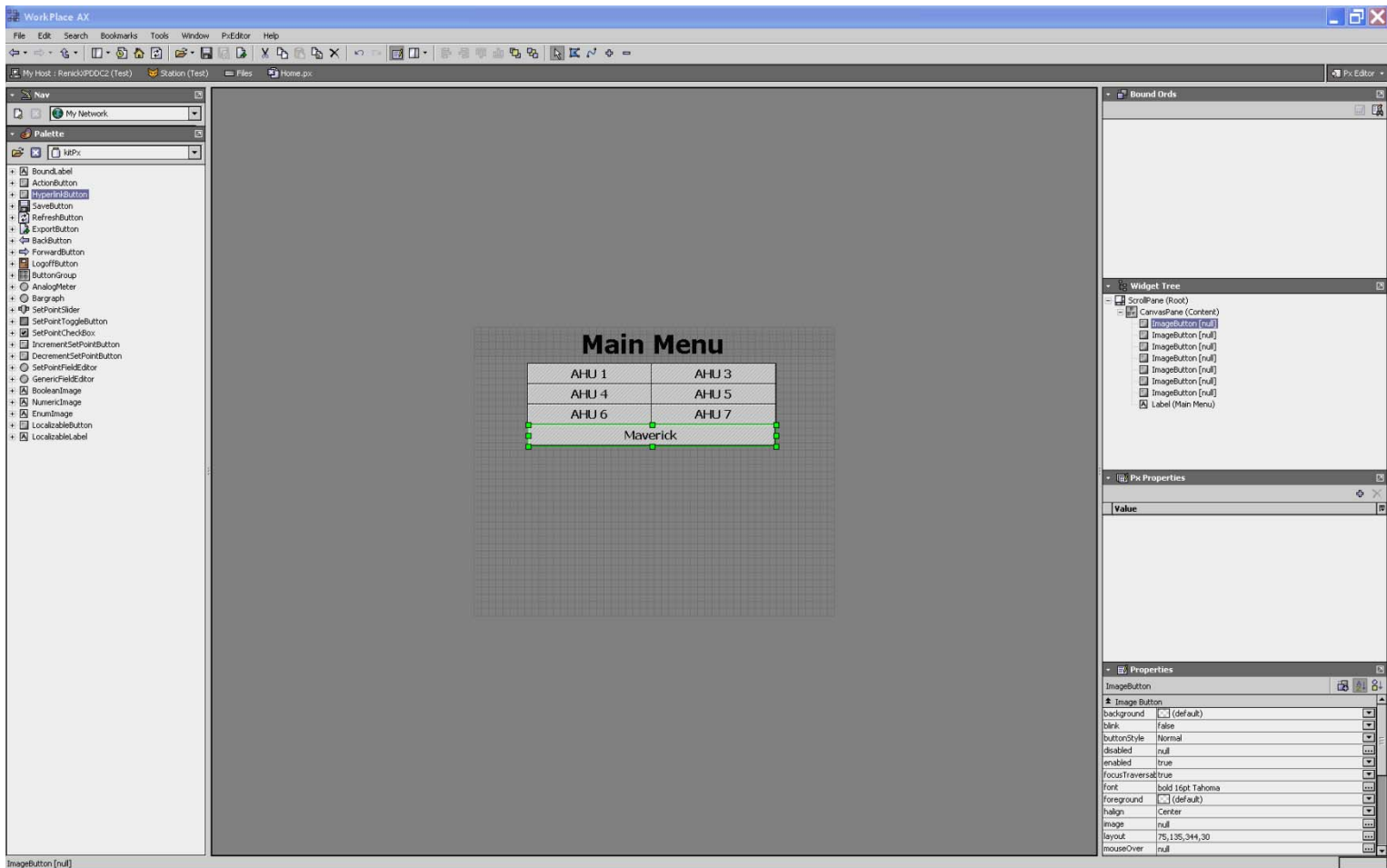
Px view in Work Place



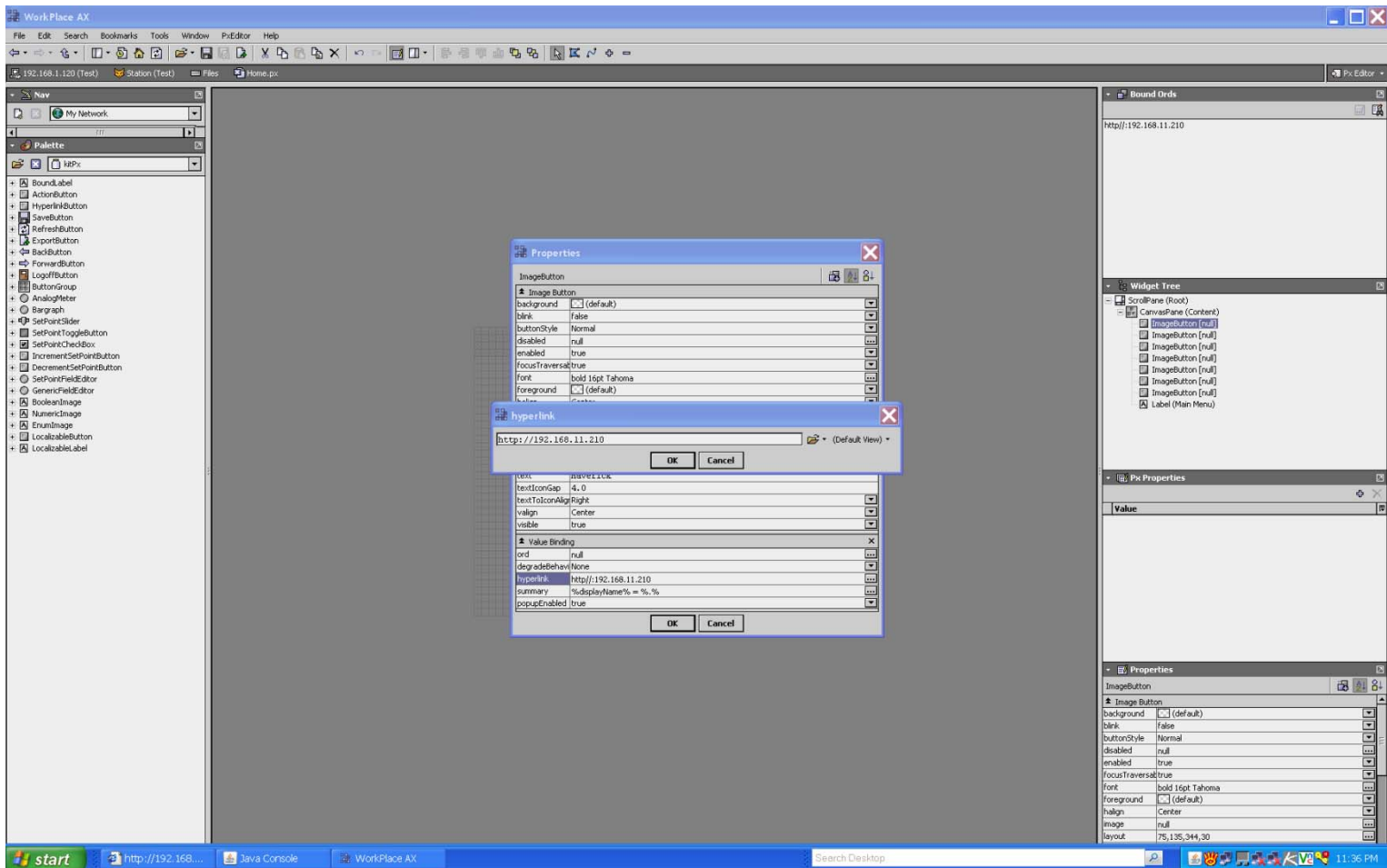
Px Editor View



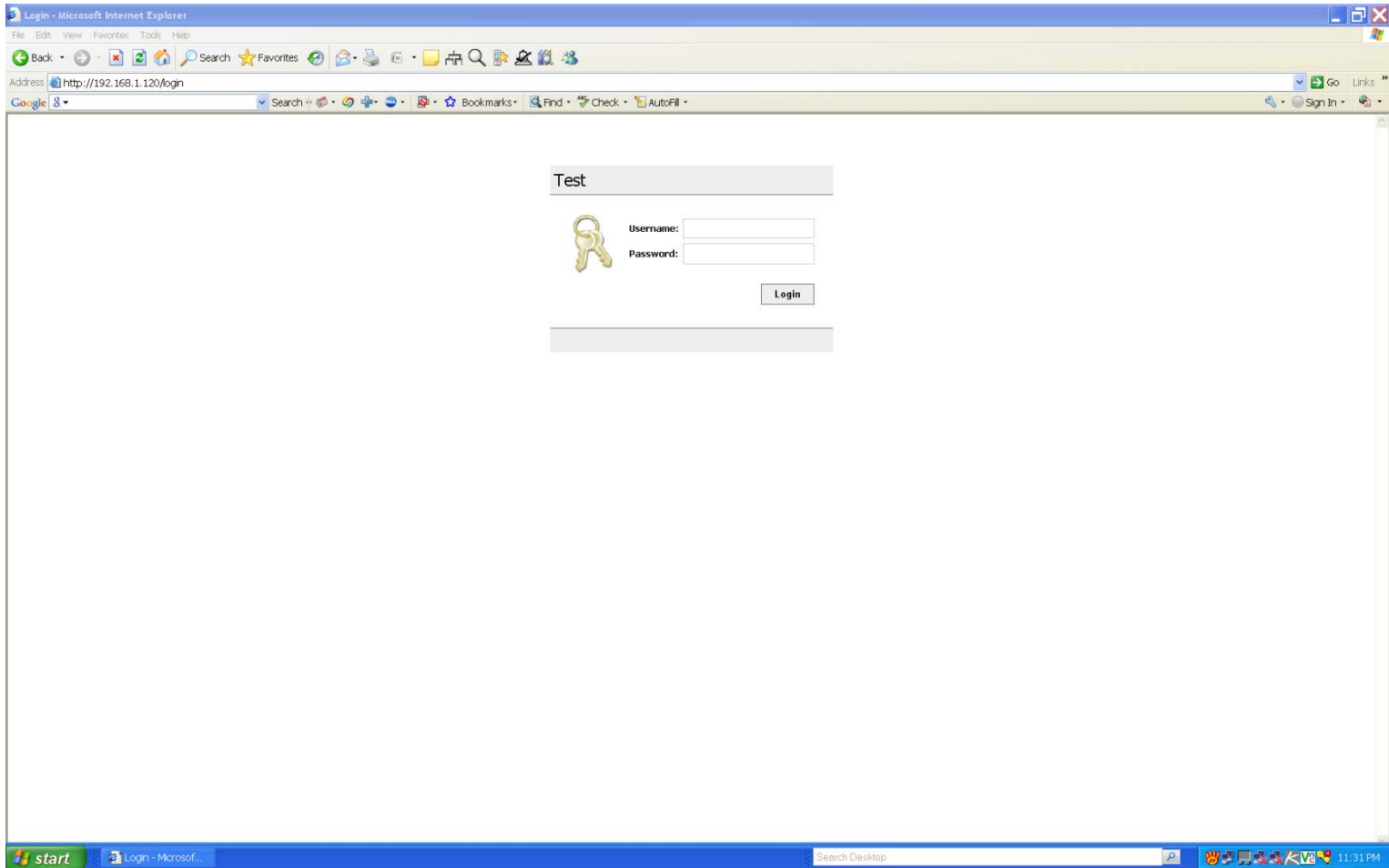
Add hyperlink button



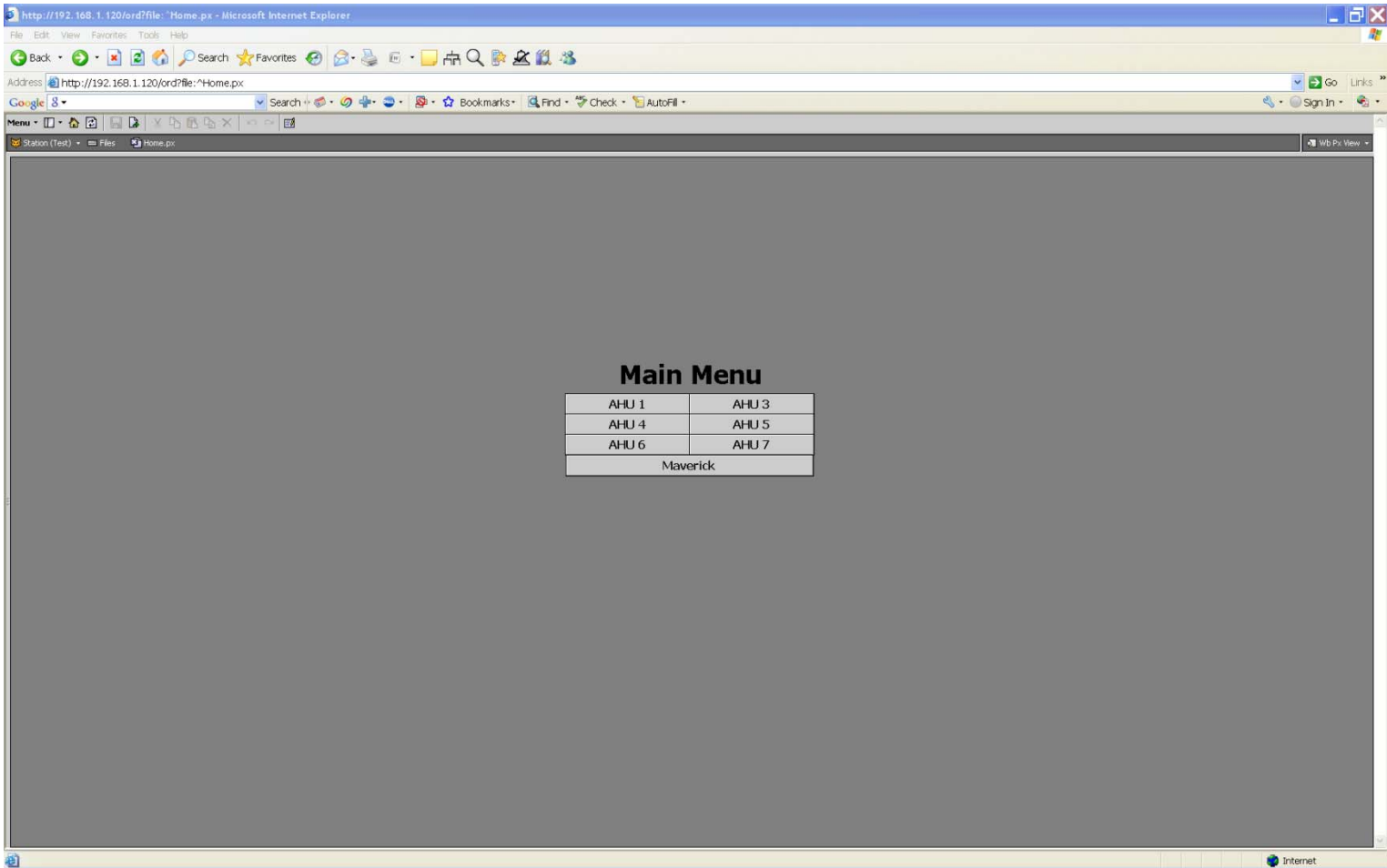
Position size and label



Enter Maverick Ip address



Log on to station or supervisor with web access



Click on new hyperlink

The screenshot shows a web browser window with the address bar displaying `http://192.168.11.210/start.html`. The page title is "IP Sensor Appliance: Operations" and the date is "February 18, 2009". The interface includes a navigation menu on the left with options: "Main", "Manual Control", "Data Logging", and "Configuration". The main content area is divided into four sections:

- INPUT VALUES**:
 - Sensor 1: RoomTemp/Cooling : 77.8 F
 - Sensor 2: RoomTemp/OccHtg : 77.8 F
 - Sensor 3: RoomTemp/UnOccHtg : 77.9 F
 - Sensor 4: DischargeAirTemp : 79.3 F
- OUTPUT VALUES**:
 - Output 1: Occupancy Relay : Off
 - Output 2: Cooling Enable : Off
 - Output 3: Occupied Heat : Off
 - Output 4: Unoccupied Heat : Off
- EMAIL ALERT STATUS**:
 - Sensor 1: Normal
 - Sensor 2: Normal
 - Sensor 3: Normal
 - Sensor 4: Normal
- MANUAL CONTROL STATUS**:
 - Output 1: Automatic
 - Output 2: **Manual**
 - Output 3: Automatic
 - Output 4: Automatic

The footer contains the text: "© Copyright 2008 www.mamacsys.com © Registered trademark MAMAC SYSTEMS, Inc."

You will be directed to Maverick home page. It is assumed that Maverick Ip address is accessible from jace or supervisor Ip address. Link will only work when in web access view it will not function in Work Place.