

Temperature Sensors

Model TE-205

FEATURES:

- Wide choice of precision platinum resistance temperature detectors (RTD's), nickel/iron RTDs, thermistors, semiconductor, or integrated circuit temperature sensors are available to be interfaced to any system
- Sensors are available in different housing for space, duct, immersion, duct averaging, remote strap-on probe and outside air applications

DESCRIPTION:

The TE-205 is available with a choice of 12 different sensing elements including precision thin film platinum, nickel/iron RTD, thermistor, semiconductor or integrated circuit temperature sensor offering high accuracy, long term stability, low hysteresis, fast response and wide operating range.

The TE-205 is available in many different housings to cover all applications. For space temperature sensing, the sensor is available in a plastic enclosure. For air duct temperature, the sensor is encapsulated in a 1/4 inch OD aluminum or stainless steel probe. The probe protrudes from the bottom of the sensor housing minimizing lead length error. The probe can be inserted directly into the duct, and mounting holes are provided to rigidly support the assembly. TE-205 is also available in a bendable aluminum 3/8 inch OD extra long probe for averaging duct air temperature. The probe incorporates numerous sensors encapsulated at equal distances across the length of the probe. The complete assembly acts as a single sensor and any temperature change is averaged across the sensors. The probe can be easily bent to fit any size duct.

APPLICATIONS:

- | | |
|--------------------|--------------------------|
| — Air Ducts | — Paper Storage Rooms |
| — Outside Air | — Grain Silos |
| — Clean Rooms | — Food Processing Plants |
| — Air Handlers | — Green Houses |
| — Computer Centers | — Environmental Chambers |
| — Laboratories | — Process Control |
| — Office Buildings | — Hydraulic Systems |

For monitoring water temperature, the TE-205 is available with a 1/4 inch OD probe with a fitting that can be screwed directly into any thermowell providing a rigid support to the assembly. The TE-205 is also available with a remote probe to be strapped on a pipe or any other application in which high temperatures are encountered.

For monitoring outside air temperature the TE-205 is also available in a weather proof enclosure with a suitable sun shield to be mounted outside.

ORDERING INFORMATION: TE-205-

ENCLOSURE	SENSOR	PROBE LENGTH	PROBE MATERIAL	THERMOWELL FITTING
A) Space B) Duct C) Immersion D) Duct Avg E) RP/SO* F) OAWP** G) Custom	1) 100 ohm Platinum ±.1% @0°C 2) 500 ohm Platinum ±.1% @0°C 3) 1000 ohm Platinum ±.1% @0°C 4) 1000 ohm NiFe ±1.0% @3.0 ohms/°F 5) 1000 ohm NiFe ±1.0% @2.23 ohms/°F 6) 2000 ohm Silicone RTD @68°F 7) 10,000 ohm Thermistor ±0.2°C 8) Semiconductor ±0.5°F 8X) Paragon EC-128 9) Integrated Circuit 1.0uA/°C 2-wire 9X) Integrated Circuit 10mV/°C 3-wire 10) 3000 ohm Thermistor ±0.2°C 15) Custom	A) 4 inches B) 6 inches C) 8 inches D) 12 inches E) 2 inches F) 6 feet G) 12 feet H) 24 feet I) Custom	1) Aluminum 2) Stainless Steel 3) Custom	A) Brass 1/4" NPT B) Brass 1/2" NPT D) Custom

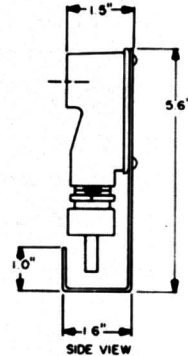
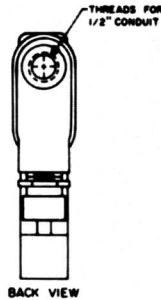
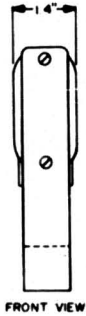
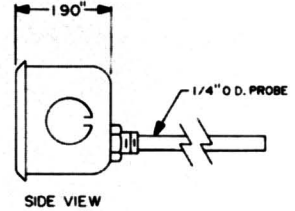
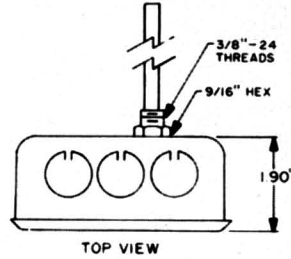
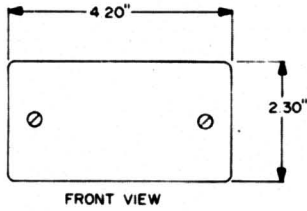
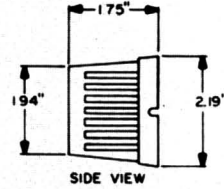
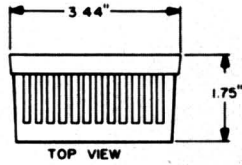
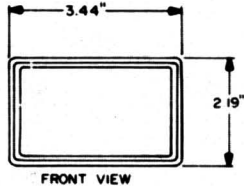
*Remote probe or strap-on

**Outside air weather proof.

The MAMAC warranty covers parts and labor for 1 year from date of shipment.

Mamac Systems reserves the right to change any specifications without notice to improve performance, reliability, or function of our products.

TE-205



A Complete Line of Transducers From a Single Source

Space Temperature
Duct Temperature
Outside Temperature
Duct Avg Temp
Strap-On Temp
Remote Temperature
Space Avg Temp
Differential Temp
Space Humidity
Duct Humidity
Outside Humidity

Remote Humidity
Temp & Humidity
Motor Current
Voltage
Pneumatic Pressure
Steam Pressure
Water Pressure
Air Pressure
Duct Static Pres
Bldg Static Pres
Filter Pres Drop

Compressor Head Pres
Compressor Suction Pres
Chiller Head Pres
Chiller Suction Pres
C W Flow
H W Flow
Steam Flow
Gas Flow
Tank Level
Rainfall
Windspeed

Wind Direction
Air Flow
Water Alert
Ambient Light
Outside Light
Damper Control
Mixing Valve Ctrl
Vane Control
Soil Moisture
Local Indication
Setpoint Control

All Mamac Transducers Are Directly Compatible To:

Advanced Electrical Appl.
Advanced Micro Systems
Aegis
Allan Bradley
American Auto-Matrix
Andover Controls
AT&T
Atlantic Energy Tech
Automated Logic
Barber-Colman
Butler Controls
Carrier-Bldg Auto Sys

CESCO
Climatron
Computer Science
Control Pak Corp
Control Systems International
Detection Systems
Eagle Signal
EDA Sims
Elemco Prime Energy
Encon Systems
Facilitec

Functional Devices
General Electric
Hewlett Packard
Honeywell
HSQ Technology
Hypertek
Johnson Controls
Leviton
Litton FMS
Margaux Controls
MCC Powers

Micro Control Sys
Mosler
Novar Controls
Oak Adec
Opto 22
Paragon Electric
Powerline Comm
Radix II
Raytheon
Robertshaw Controls
Robertshaw Integrated Sys

Solid State Systems
Solidyne
Sparton
Square D
Staefa Control Sys
TJ Controls
Tour Anderson
The Trane Company
Triangle Micro Sys
Trimax
United Technologies
Westinghouse



10913 Valley View Road Minneapolis, MN 55344-3730
USA • 800/843-5116 • 612/835-1626
TELEX 291161 MAMAC SYS MPS • FAX 6128295331